

Monthly Operations Report for November 2025 at KLUU

Operations

	Nov 2025	Nov 2024	Year over Year Change
TRANSITION	85	66	28.8%
TOUCH & GO	320	53	503.8%
TAKEOFF	502	194	158.8%
LANDING	511	175	192.0%
GO AROUND	43	18	138.9%
FLYOVER	8	0	-
Totals	1739	511	240.3%

NOTE: FLYOVER and TRANSITION are excluded from the total operations count.
Operations classified as TOUCH & GO and GO AROUND are counted as two distinct operations, a landing and a takeoff respectively.

Aircraft Type

	Nov 2025	Nov 2024	Year over Year Change
Rotorcraft	6	1	500.0%
Fixed wing single engine	1593	445	258.0%
Fixed wing multi engine	87	63	38.1%
Unknown	53	2	2,550.0%

Engine Type

Turbo-shaft	2	0	-
Turbo-prop	73	26	180.8%
Turbo-fan	0	3	-100.0%
Reciprocating	1536	430	257.2%
4 Cycle	75	50	50.0%
Unknown	53	2	2,550.0%

Number of Engines

1	1599	446	258.5%
2	87	63	38.1%
Unknown	53	2	2,550.0%

Average Daily Operations

Monday	51	30	70.0%
Tuesday	52	13	300.0%
Wednesday	39	17	129.4%
Thursday	47	8	487.5%
Friday	67	21	219.0%
Saturday	92	23	300.0%

Monthly Operations Report for November 2025 at KLU

Operations			
	Nov 2025	Nov 2024	Year over Year Change
Sunday	64	36	77.8%
Average per weekday	51	18	183.3%
Average per weekend	78	30	160.0%
Local vs. Transient			
Local	0	0	0.0%
Transient	1739	511	240.3%
Nights Stayed	137	61	124.6%
Seats on Overnight Aircraft	748	294	154.4%
Overnight Visitors @ 50%	374	147	154.4%
Runways			
RWY 09 GO AROUNDs	20	12	66.7%
RWY 09 LANDINGS	97	59	64.4%
RWY 09 TAKEOFFs	86	65	32.3%
RWY 09 TOUCH & GOs	62	14	342.9%
RWY 09 Total	265	150	76.7%
RWY 27 GO AROUNDs	66	24	175.0%
RWY 27 LANDINGS	409	116	252.6%
RWY 27 TAKEOFFs	410	129	217.8%
RWY 27 TOUCH & GOs	530	92	476.1%
RWY 27 Total	1415	361	292.0%

Monthly Operations Report for November 2025 at KLU

	Jan 2024	Jan 2023	Year over Year Change
Weight Class			
CLASS 1	1655	497	233.0%
CLASS 2	31	12	158.3%
Unknown	53	2	2,550.0%
Jet Traffic			
Operations	0	3	-100.0%
Taking off Rwy 09	0	0	-
Landing Rwy 09	0	2	-100.0%
Taking off Rwy 27	0	1	-100.0%
Landing Rwy 27	0	0	-

Monthly Operations Report for November 2025 at KKKU				
	Jan 2024	Jan 2023	Year over Year Change	
Largest aircraft				
Average seat count per jet	0	7.3	-100.0%	
Most Active Aircraft				
Registration	Manufacturer	Model	Operations	Percentage of Total
N4524Q	GULFSTREAM AMERICAN CORP	AA-5B	282	41.0%
N7843U	CESSNA	172F	229	33.3%
N8478U	CESSNA	172F	204	29.7%
N22334	BEECH	E-55	26	3.8%
N8327W	PIPER	PA-28-180	24	3.5%
N8334N	PIPER	PA-32-301	22	3.2%
N7497T	CESSNA	172A	18	2.6%
N781CK	PIPER	PA-31T	18	2.6%
N119JT	SCHILDER JON	SONERAI II LS	18	2.6%
N59VL	CESSNA	172L	18	2.6%
Most Active Owners				
Name		Operations	City	
HARKRADER AVIATION LLC		229	LOUISA	
RIG AVIATION LLC		204	TROY	
KELLEY AIRCRAFT LLC		58	WEYERS CAVE	
FREDERICKS HALL AVIATION LLC		26	MINERAL	
FUTURE FLYING LLC		24	MANASSAS	
N8334N LLC		22	LOUISA	
REGISTRATION PENDING		22	LEESBURG	
CHRISTIANSEN AVIATION LLC		18	WILMINGTON	
SCHILDER JON		18	WOODBIDGE	
LEFFLER GREG L		18	ZION CROSSROADS	
Owner Locations				
City	Operations		Percentage of total	
LOUISA	222		32.3%	
Unknown	203		29.5%	
TROY	170		24.7%	
CHARLOTTESVILLE	55		8.0%	
WEYERS CAVE	38		5.5%	

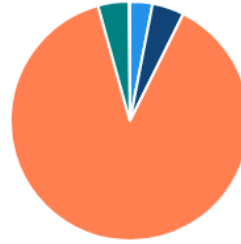
Aircraft Type

Unknown
Fixed wing multi engine
Fixed wing single engine
Rotorcraft



Engine Type

Unknown
4 Cycle
Reciprocating
Turbo-prop
Turbo-shaft



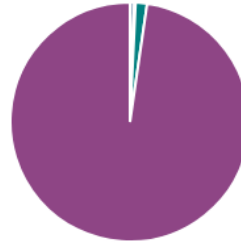
Number of Engines

1
2
Unknown



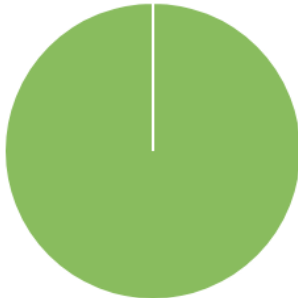
Weather

Unknown
IFR
LIFR
MVFR
VFR



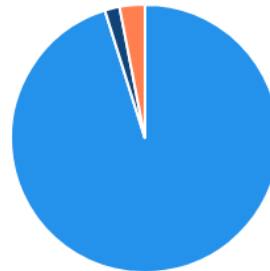
Local/Transient

Local
Transient

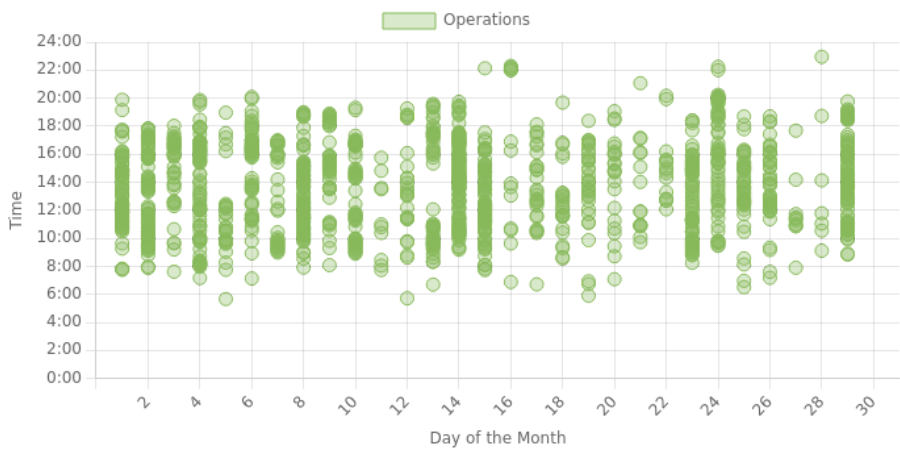


Weight Class

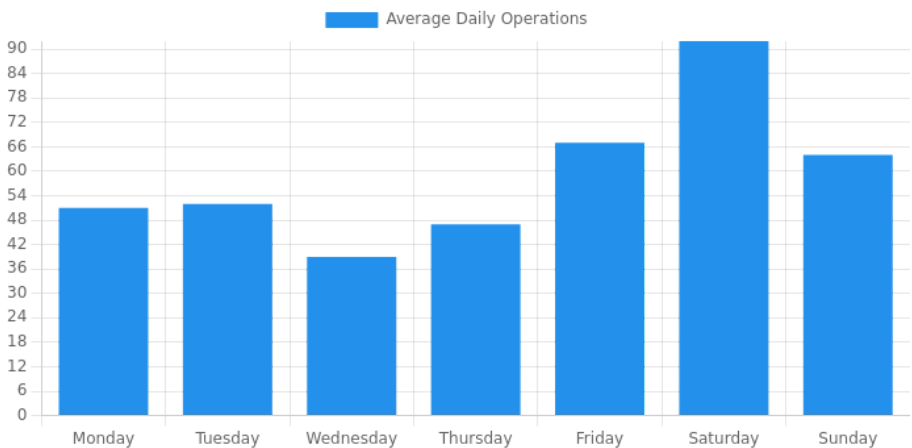
CLASS 1
CLASS 2
Unknown



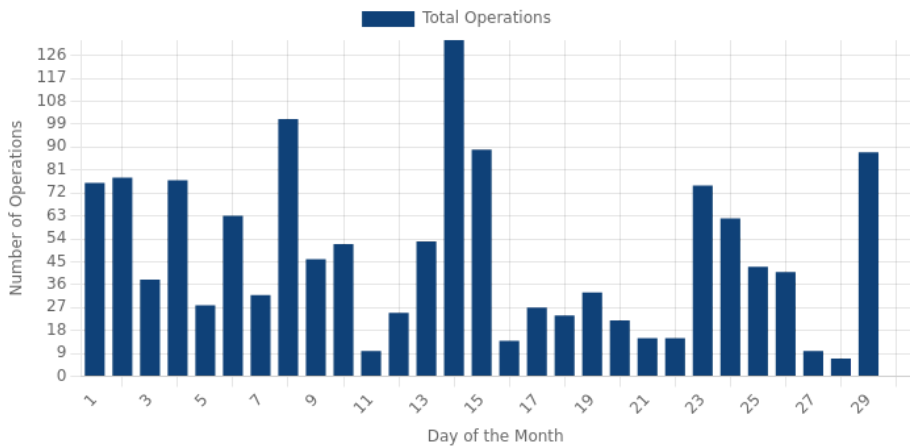
Time of Day



Day of the Week

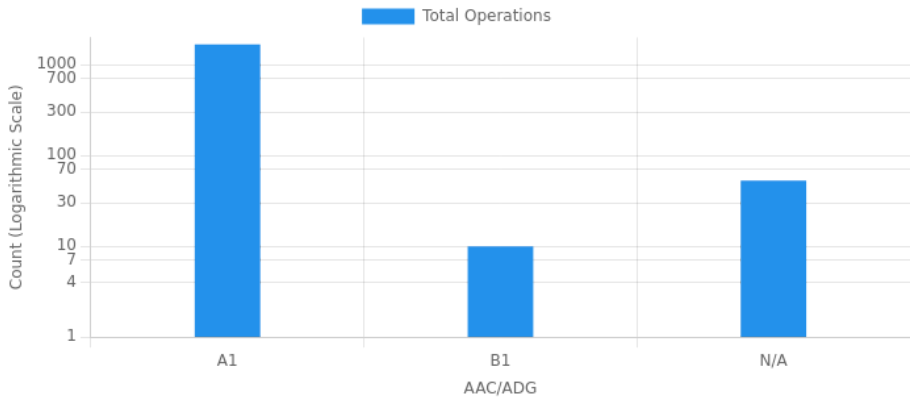


Daily Operations



Operations by AAC/ADG						
	I	II	III	IV	V	VI
A	1676	0	0	0	0	0
B	10	0	0	0	0	0
C	0	0	0	0	0	0
D	0	0	0	0	0	0
E	0	0	0	0	0	0

AAC/ADG Distribution



Report generated by RunwayStats.com on December 3, 2025, 1:16am CST